



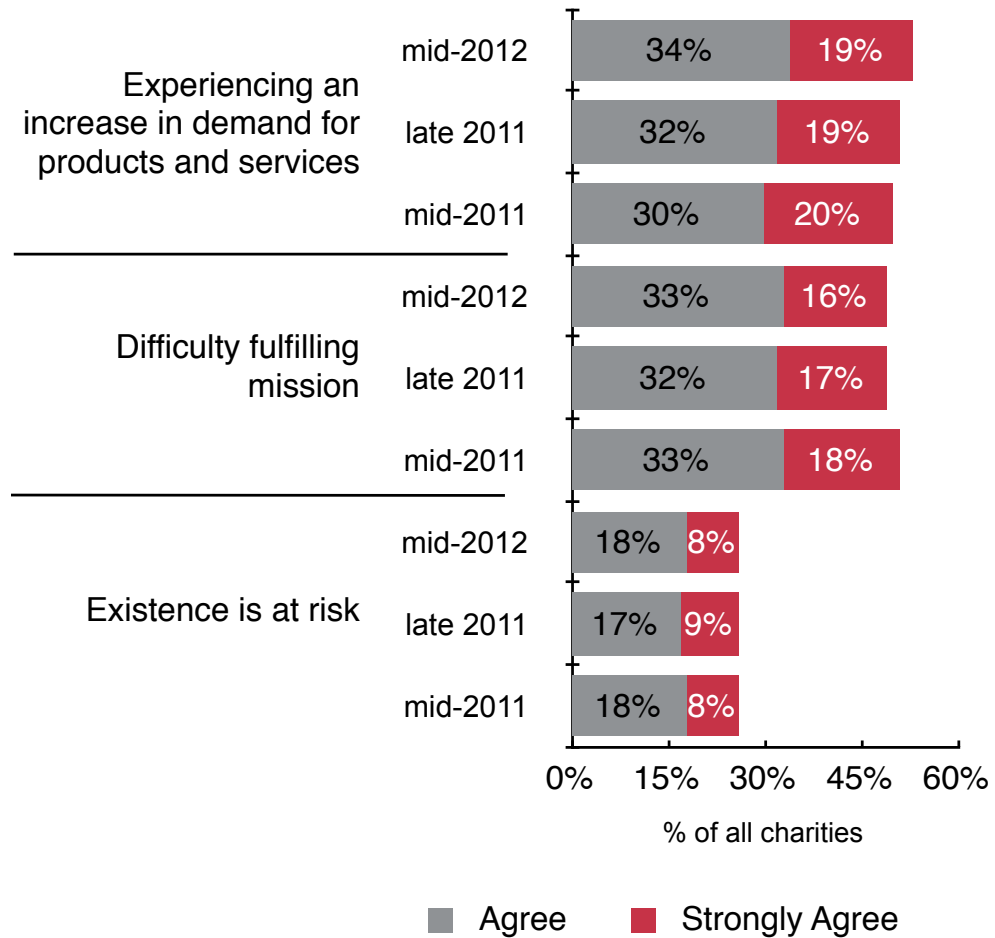
Imagine Canada's *Sector Monitor*

October, 2012

Highlights from the *Sector
Monitor*, Vol.3, No.1

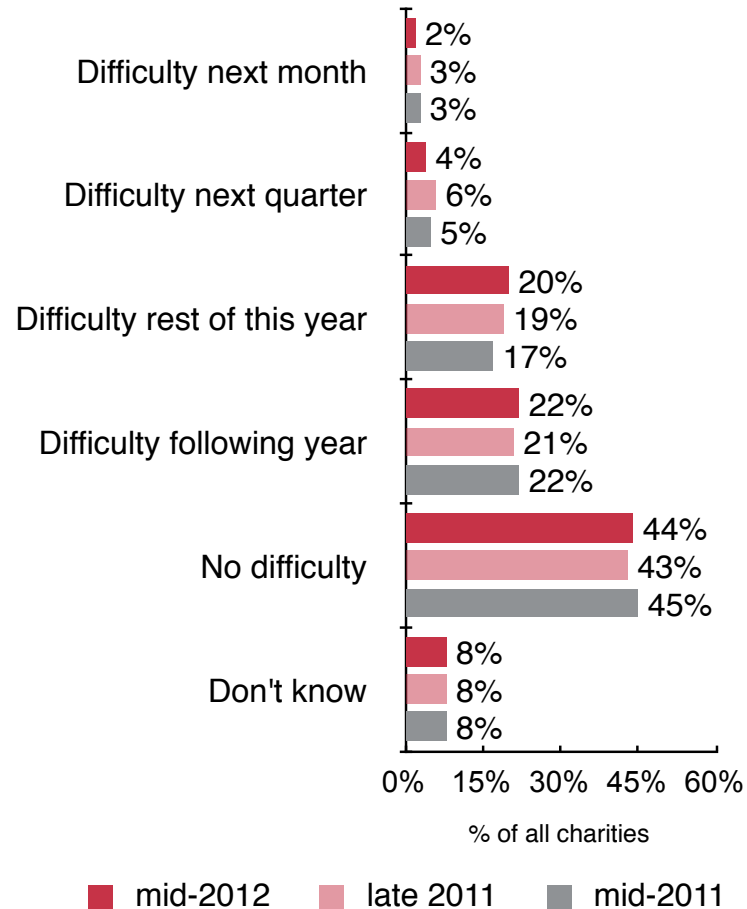
Half of organizations report difficulty fulfilling mission, while one-quarter are at risk.

The percentage of organizations reporting increased demand has risen since mid-2011.



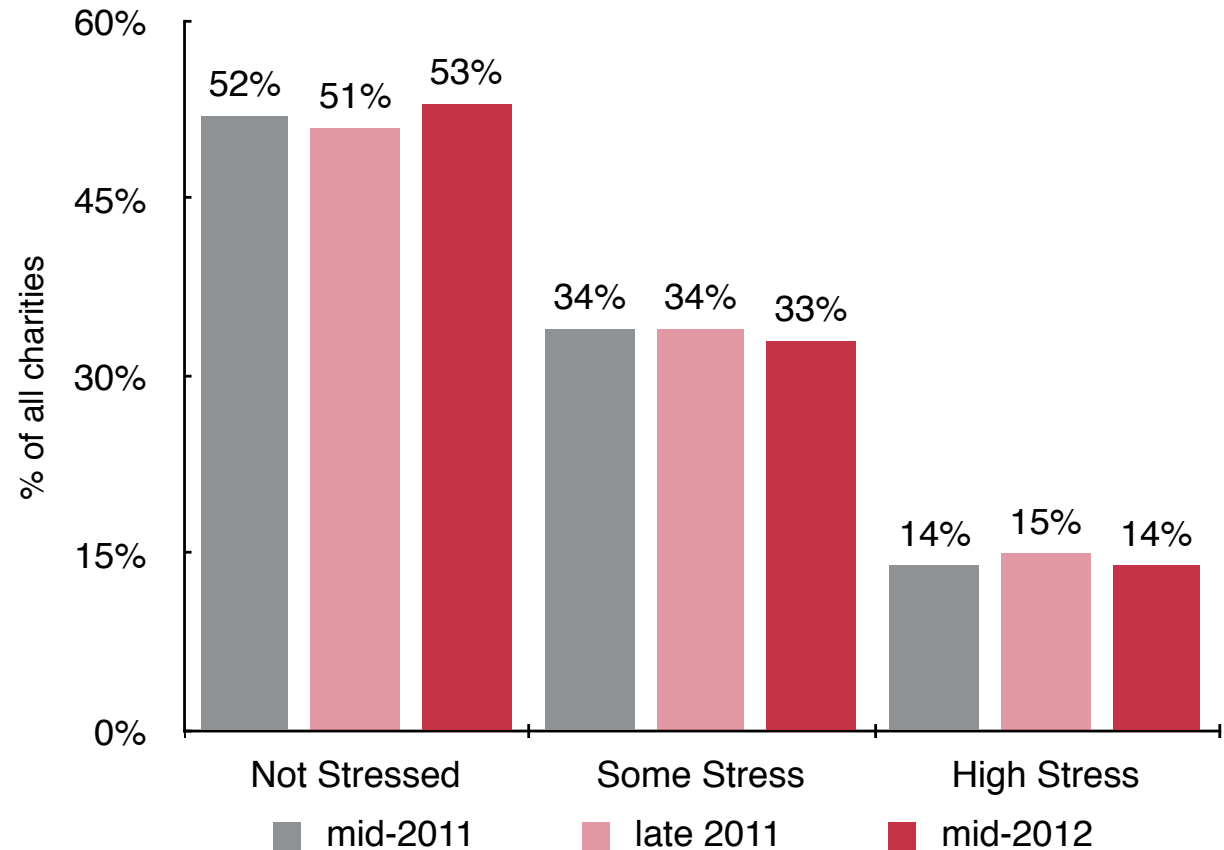
Just under half of organizations forecast difficulty covering expenses at some point in the next two years.

The number of charities anticipating difficulty covering expenses between four months and a year from now has increased.

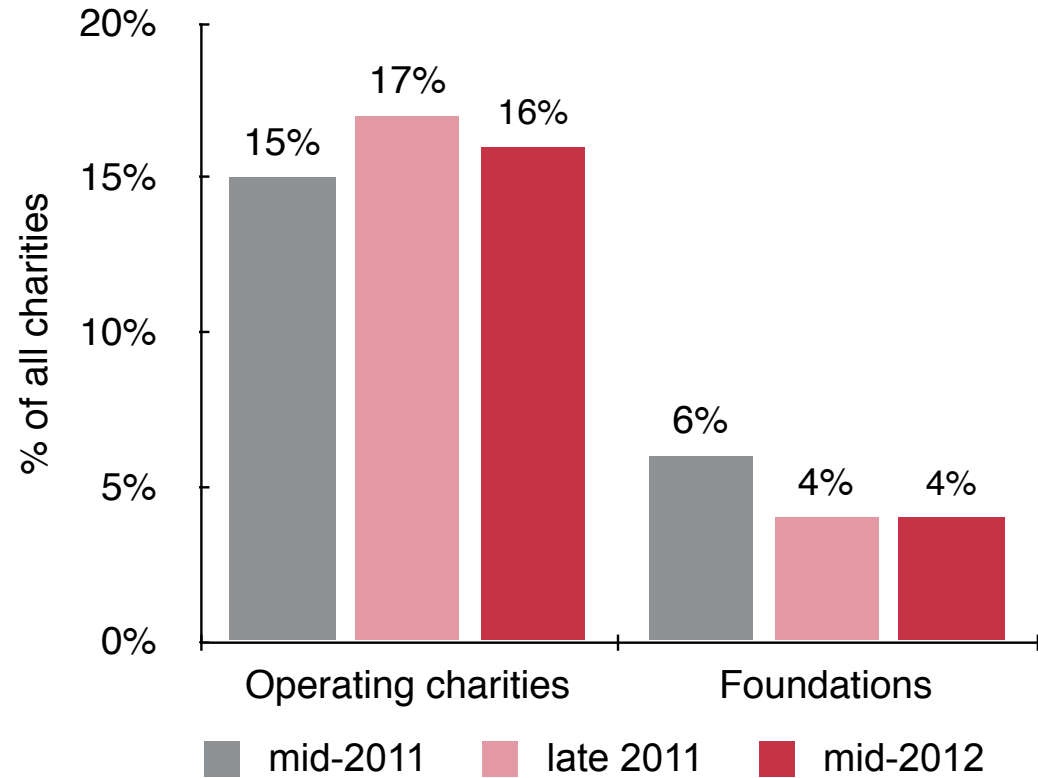


About one in seven charities is under high stress.

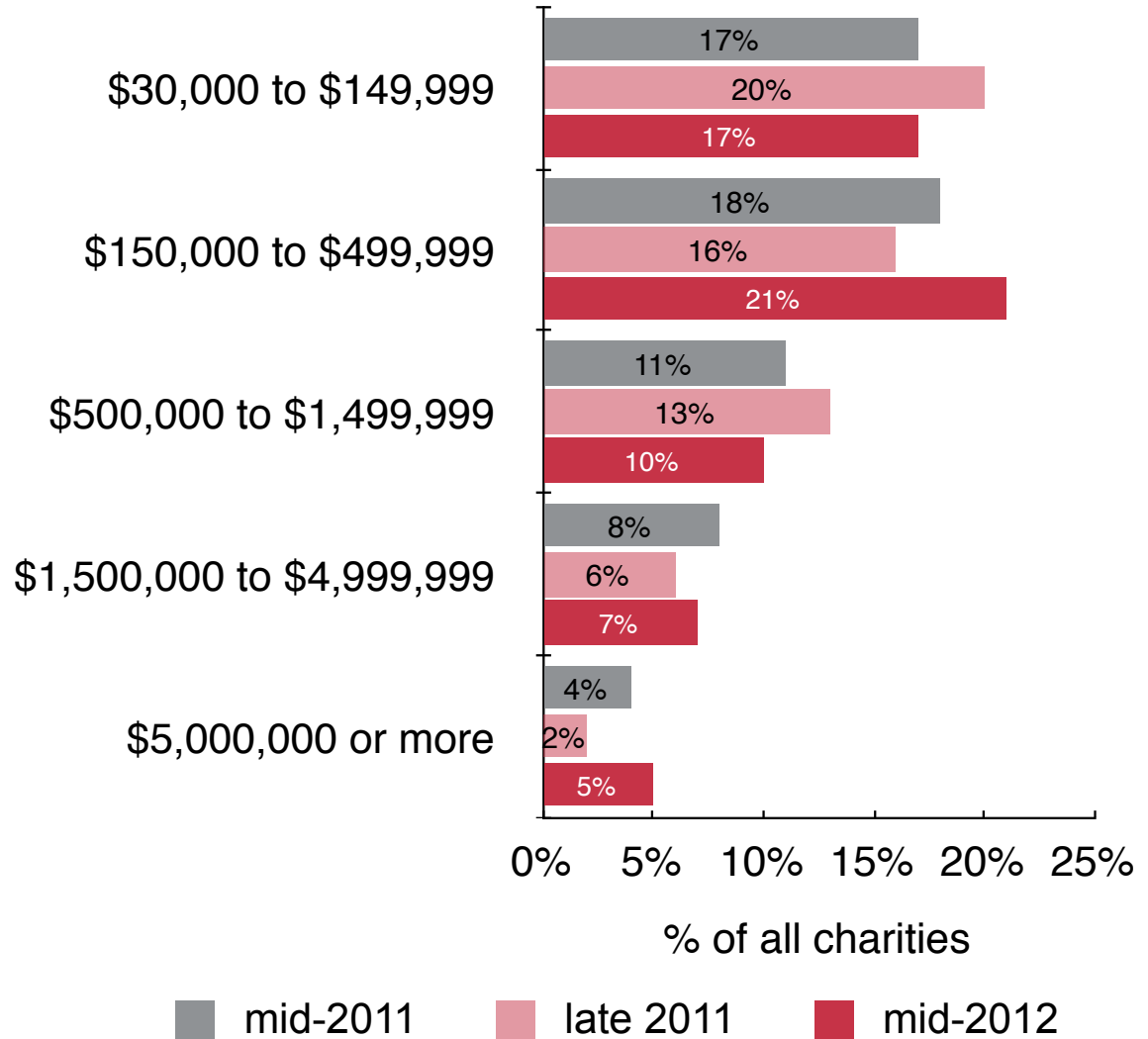
Stress levels have also remained constant from mid-2011.



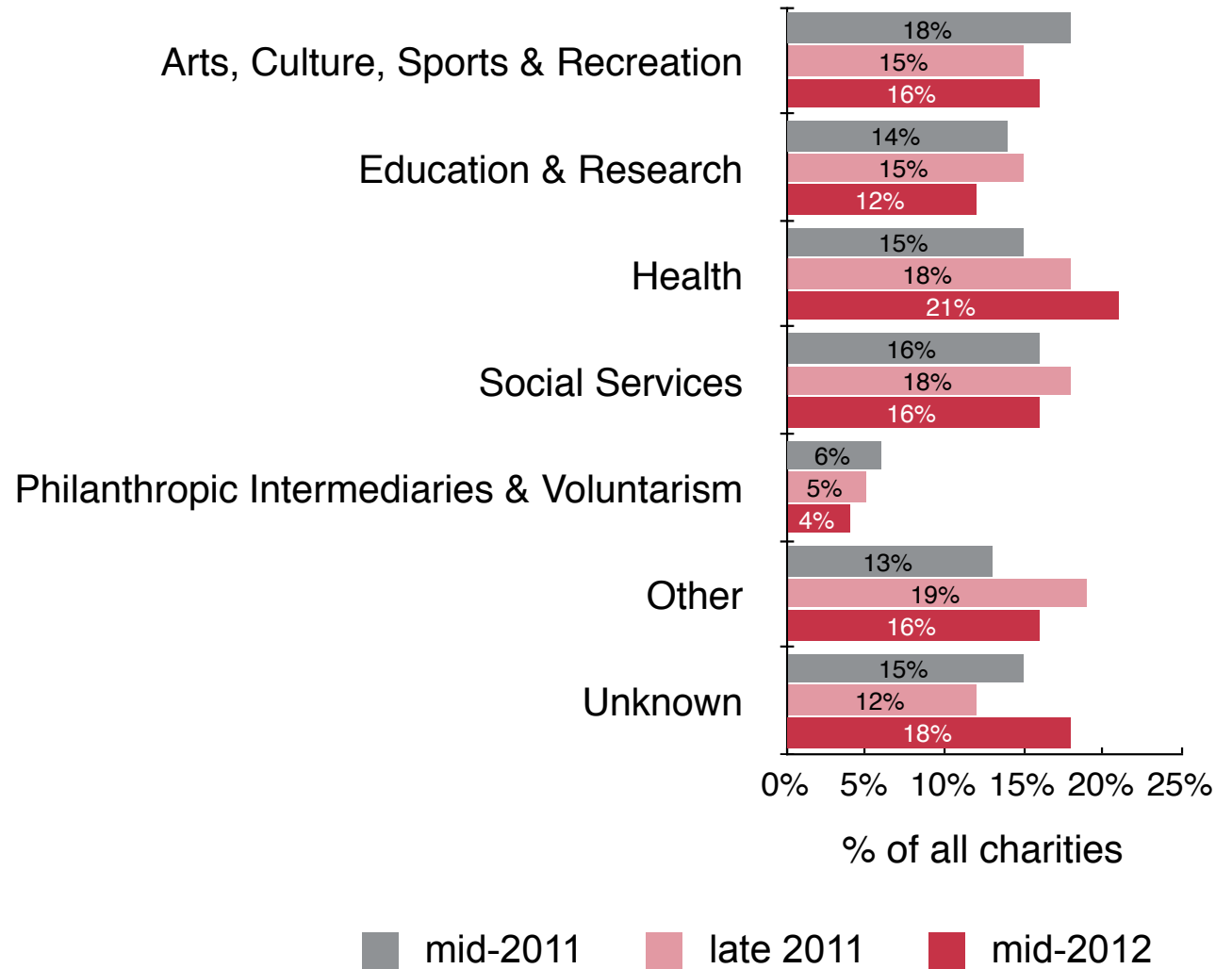
Operating charities are more likely to be under high stress than foundations.



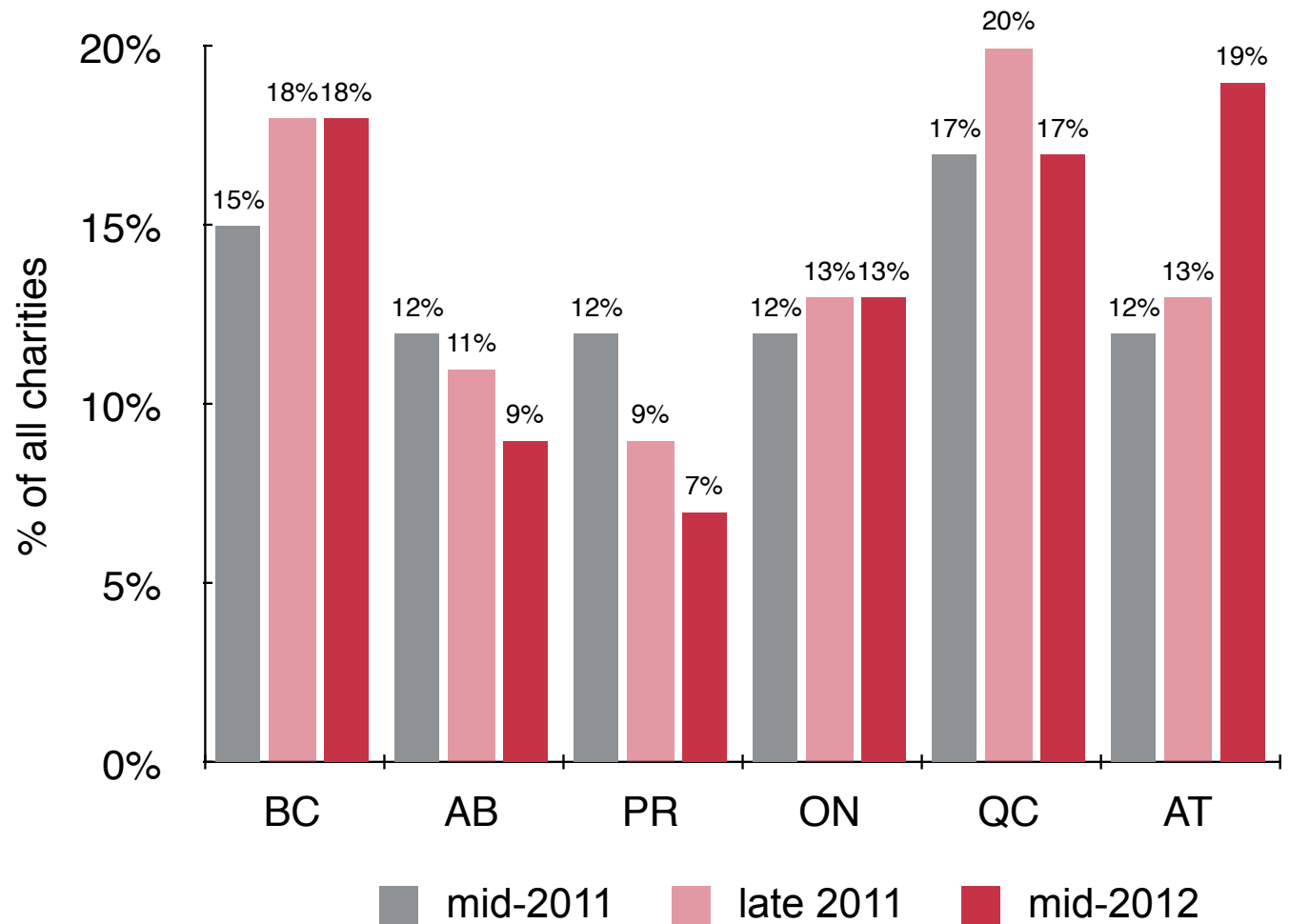
Generally, smaller charities are more likely to be under high stress than are larger charities.



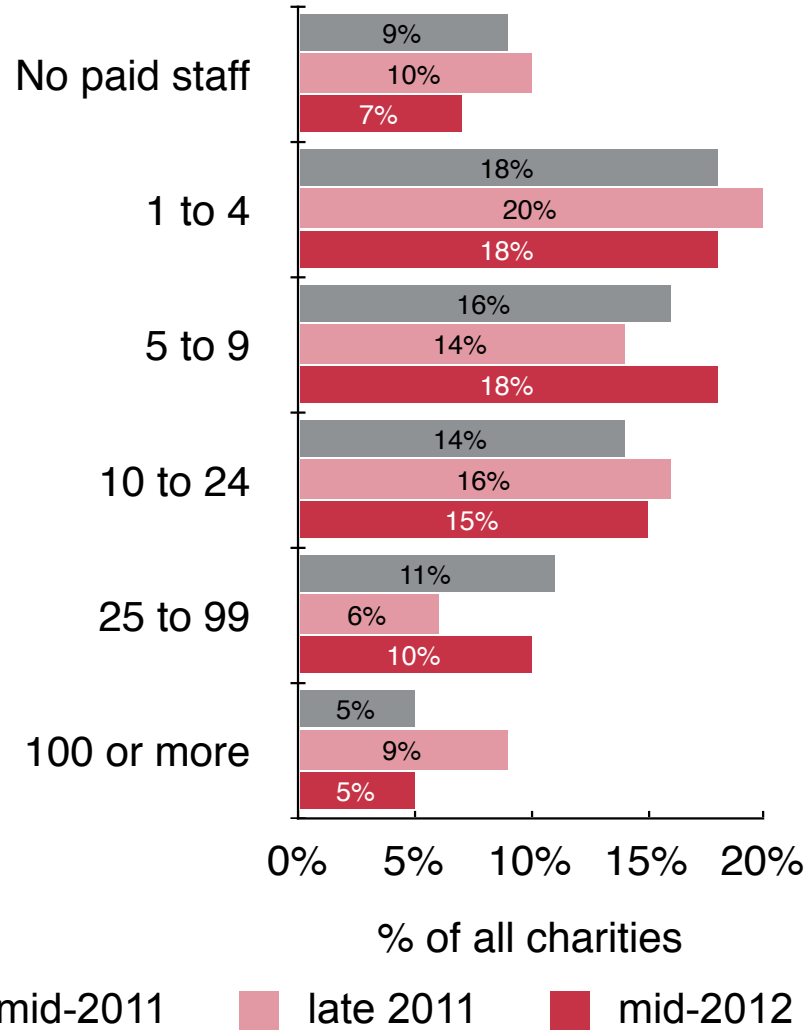
Philanthropic Intermediaries and Voluntarism Promotion organizations are less likely to be under high stress. Health organizations are more likely to be under high stress.



British Columbia and Atlantic organizations are most likely to be under high stress. Stress levels for charities from Alberta and the Prairies are trending down.

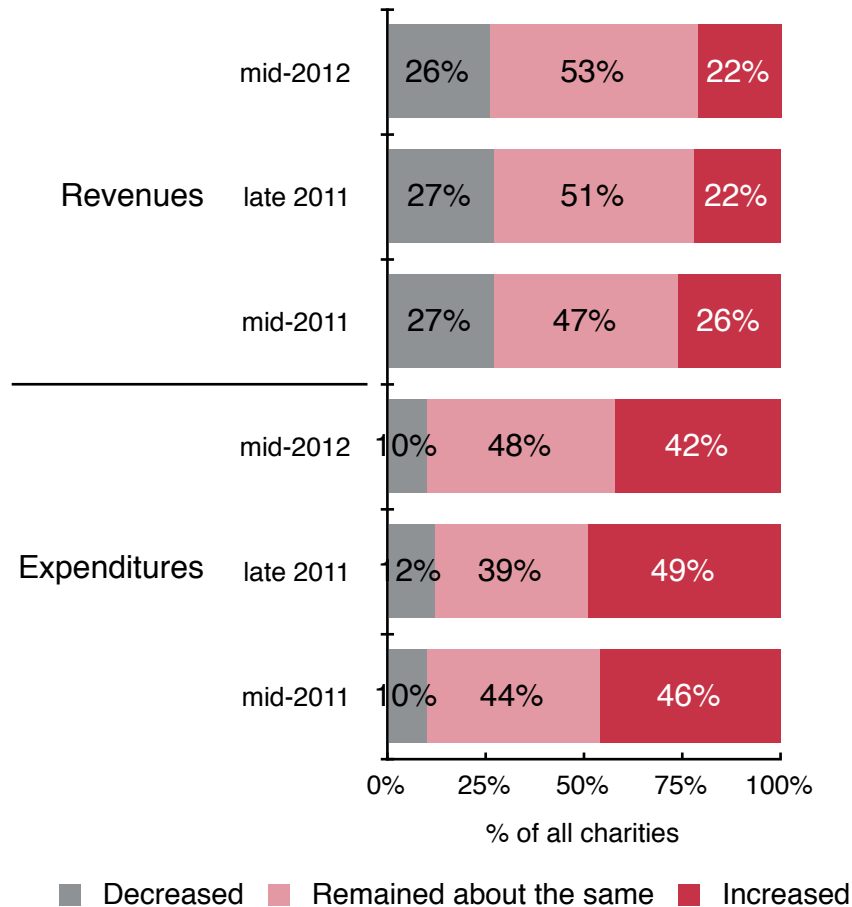


Generally, charities with larger numbers of paid staff are under lower stress.



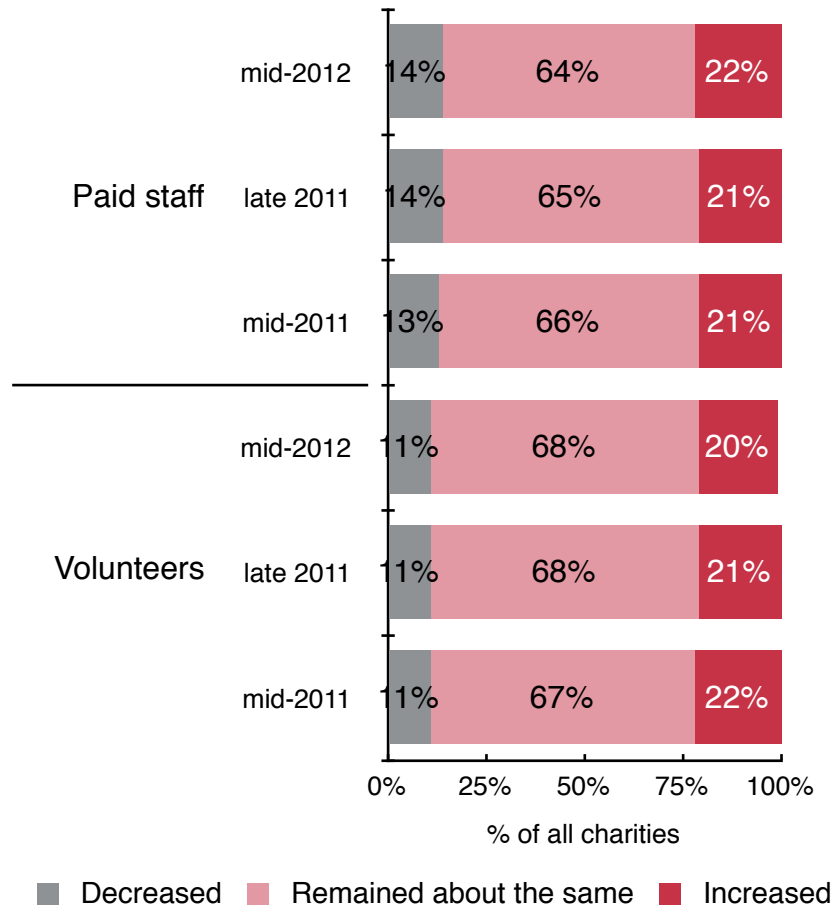
The number of charities reporting increased expenditures has dropped from late 2011.

Financial resources have not increased significantly while many charities continue to report increased expenditures.



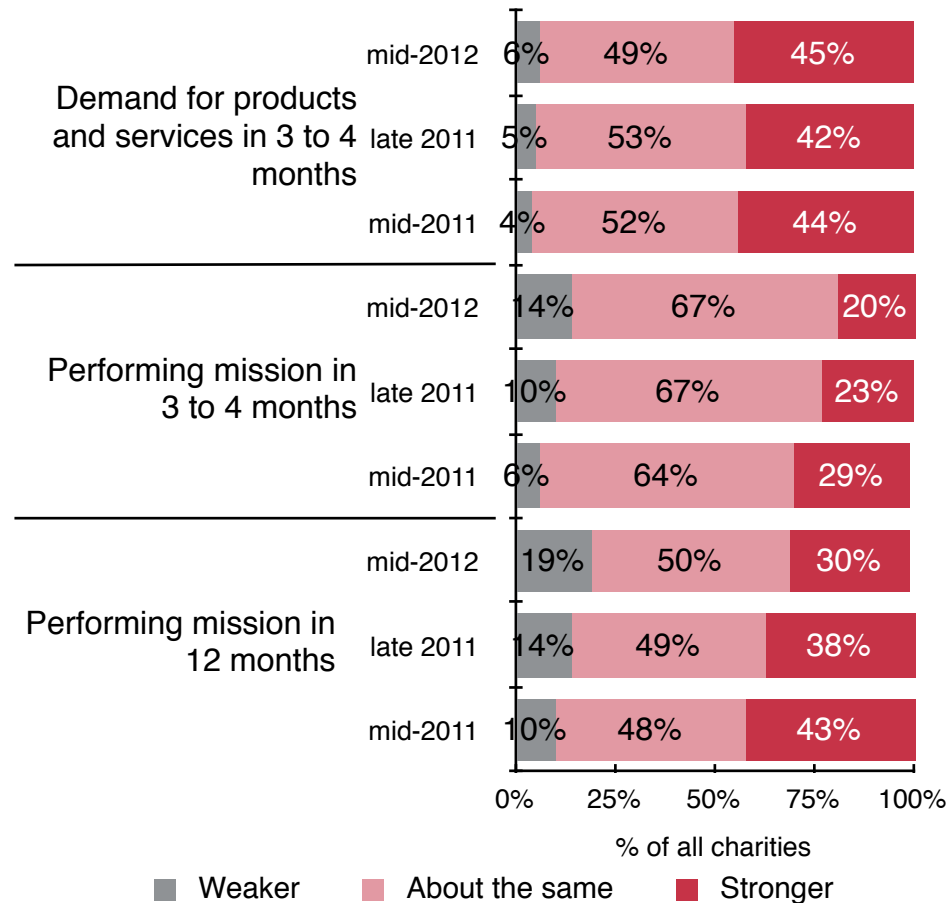
About two thirds of charities report that staff and volunteer numbers have remained about the same.

The human resources picture continues to remain largely stable.



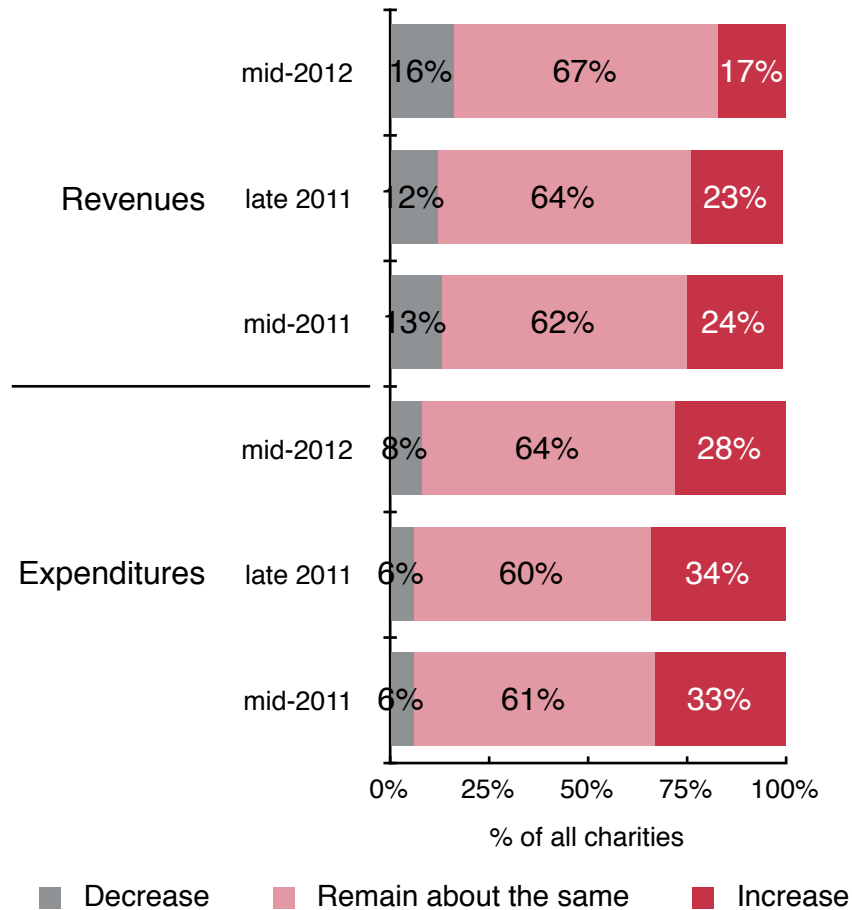
Leaders are consistent in their predictions of demand, but are increasingly more likely to predict that they will be weaker in terms of their ability to perform their mission over the near- to medium-term.

Leaders are more pessimistic about the future.



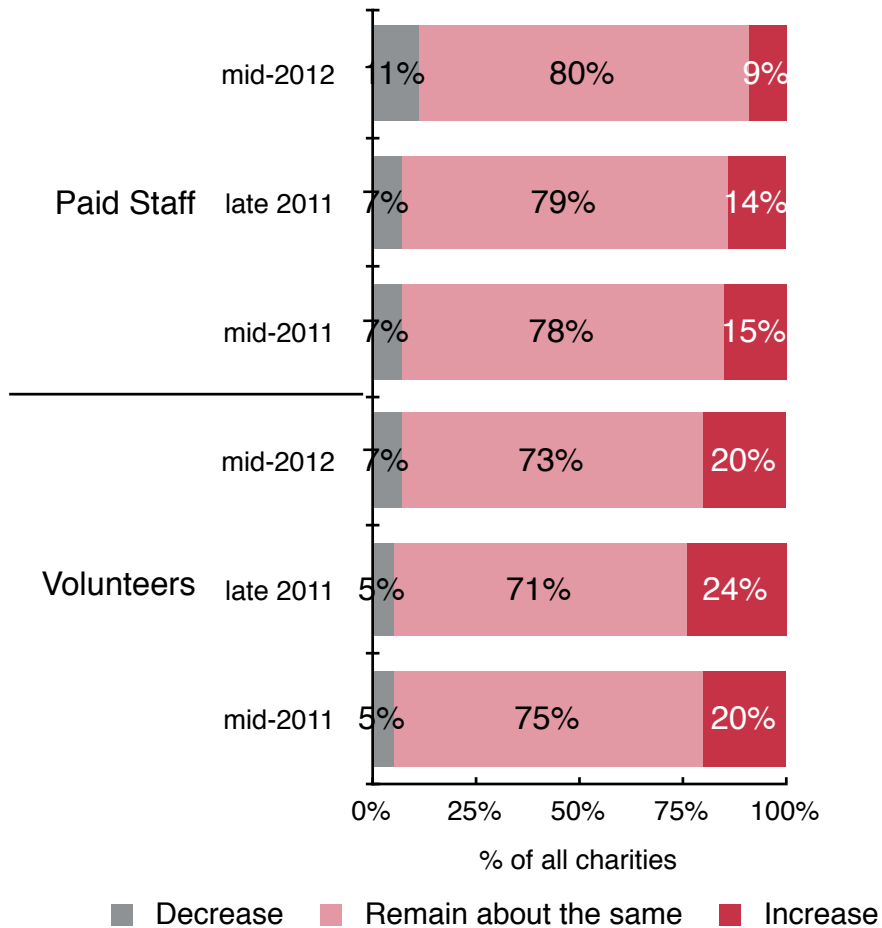
Fewer leaders are predicting that revenues and expenditures will increase in the next three to four months.

Leaders are less optimistic about their financial situation in the near-term.



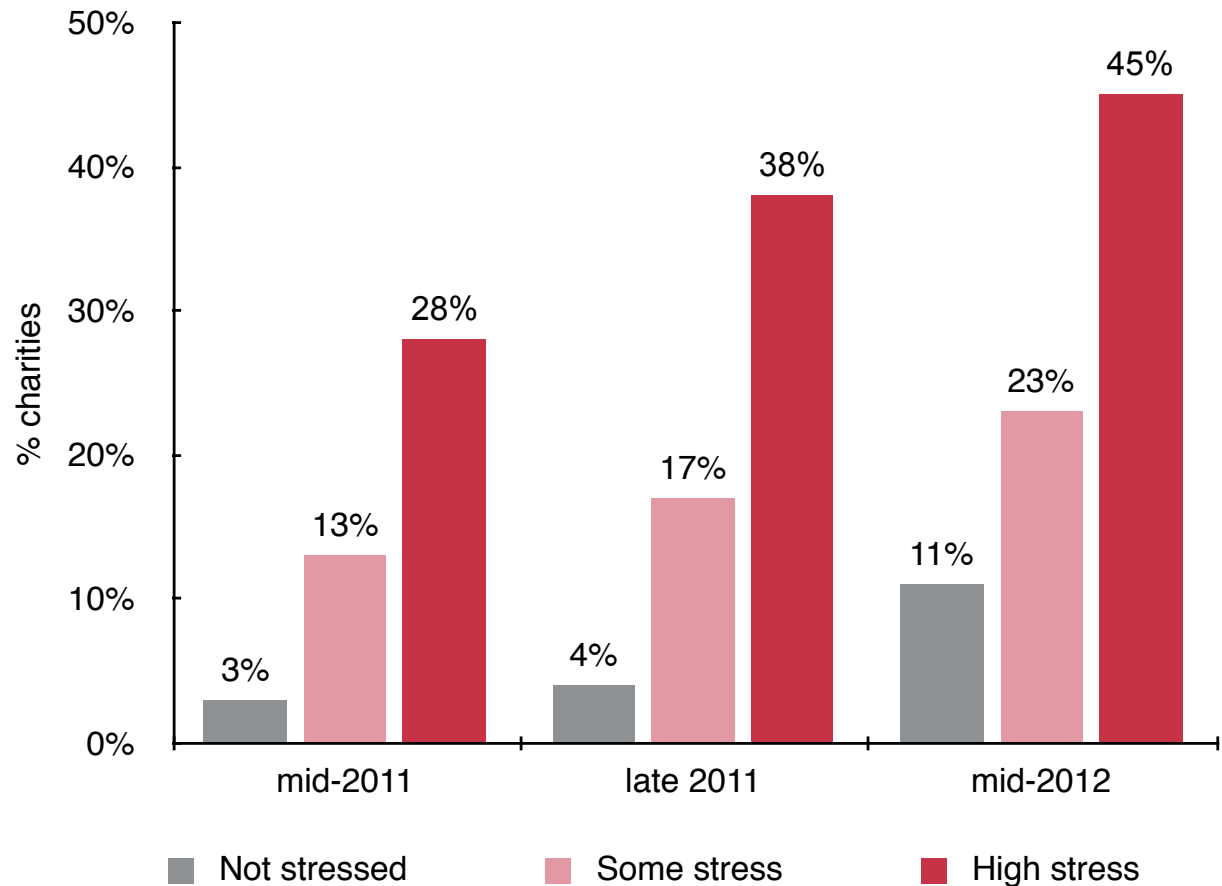
Fewer leaders are predicting that the number of paid staff their organization employs will increase in three to four months. Predictions for the number of volunteers remain steady.

Leaders are also less optimistic about their paid staff situation.



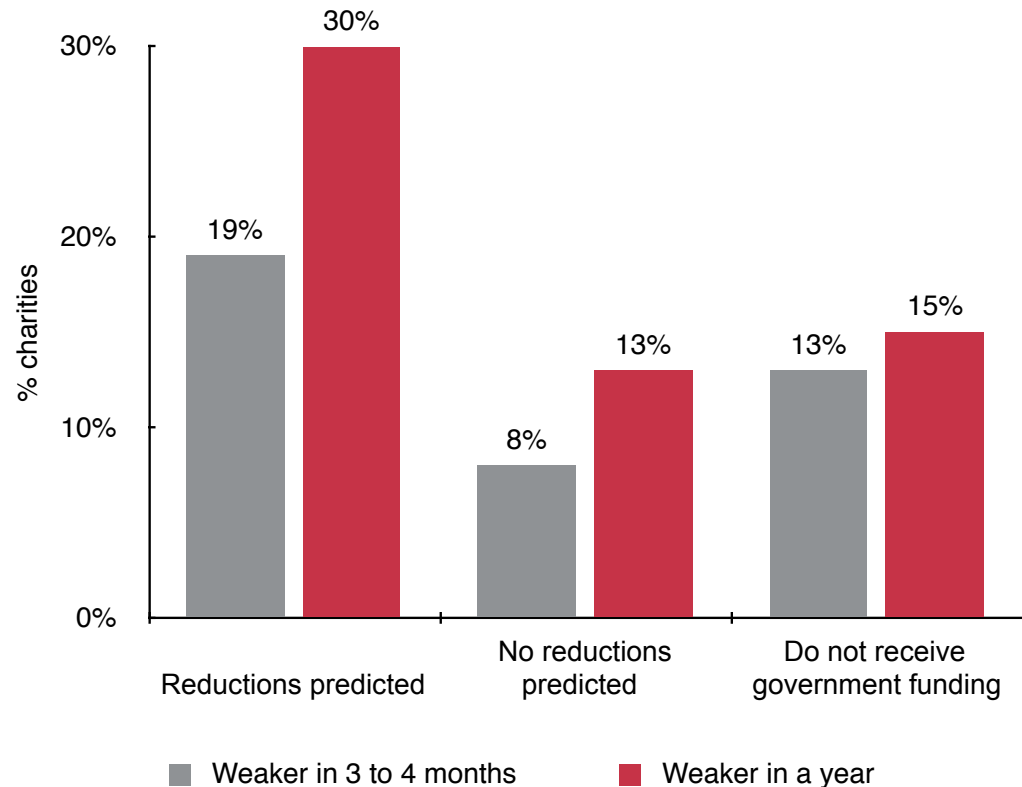
The percentage of leaders predicting their organization will be less able to carry out their mission in one year's time has increased, particularly among charities that are under stress.

Leaders of organizations under stress, particularly high stress, are less optimistic about the future.



Leaders who anticipate reductions in funding to their organization within the next two years are more likely to predict that they will be weaker in terms of their ability to carry out their mission over the near- and medium-terms.

Leaders who predict their organizations will see reductions in government funding are also less optimistic.



Imagine Canada's programs that support the sector include:

CANADIAN DIRECTORY
TO FOUNDATIONS
& CORPORATIONS

\$1 billion in available funding.



Promotion of good corporate citizenship.

Charity Tax Tools

Essential tax information for
Canada's charities.



Governance and financial accountability.

GIVING &
VOLUNTEERING

Knowledge about the sector and
how Canadians support it.

Insurance & Liability
RESOURCE CENTRE for Nonprofits

Risk management support for the sector.



Canada's largest collection of charitable
and nonprofit resources.

Imagine / Canada

Acknowledgements

We would like to acknowledge the participation of our project partners (please see the report accompanying this presentation for a complete list of partners) and the many thousands of survey respondents who have participated in the Sector Monitor over the previous three years.

About Imagine Canada

Imagine Canada is a national charitable organization whose cause is Canada's charities and nonprofits. We reinforce the sector's collective voice, act as a forum and meeting place and create an enabling environment in which organizations contribute to building stronger communities.

Imagine Canada Toronto

2 Carlton Street
Suite 600
Toronto, Ontario M5B 1J3
Tel.: (416) 597-2293
Toll free: 1-800-263-1178

Imagine Canada Ottawa

1705 – 130 Albert Street
Ottawa, Ontario
K1P 5G4
Tel.: (613) 238-7555
Toll free: 1-800-263-1178

Imagine Canada Calgary

635 8th Ave. SW, Suite 600
Calgary, Alberta
T2P 3M3
Toll free: 1-800-263-1178

©2012, Imagine Canada This presentation is licensed under a [Creative Commons Attribution-Noncommercial-No Derivative Works 2.5 Canada License](#). Please contact the copyright holder if you would like permission to use these resources in a manner which is not covered under the current license.

