



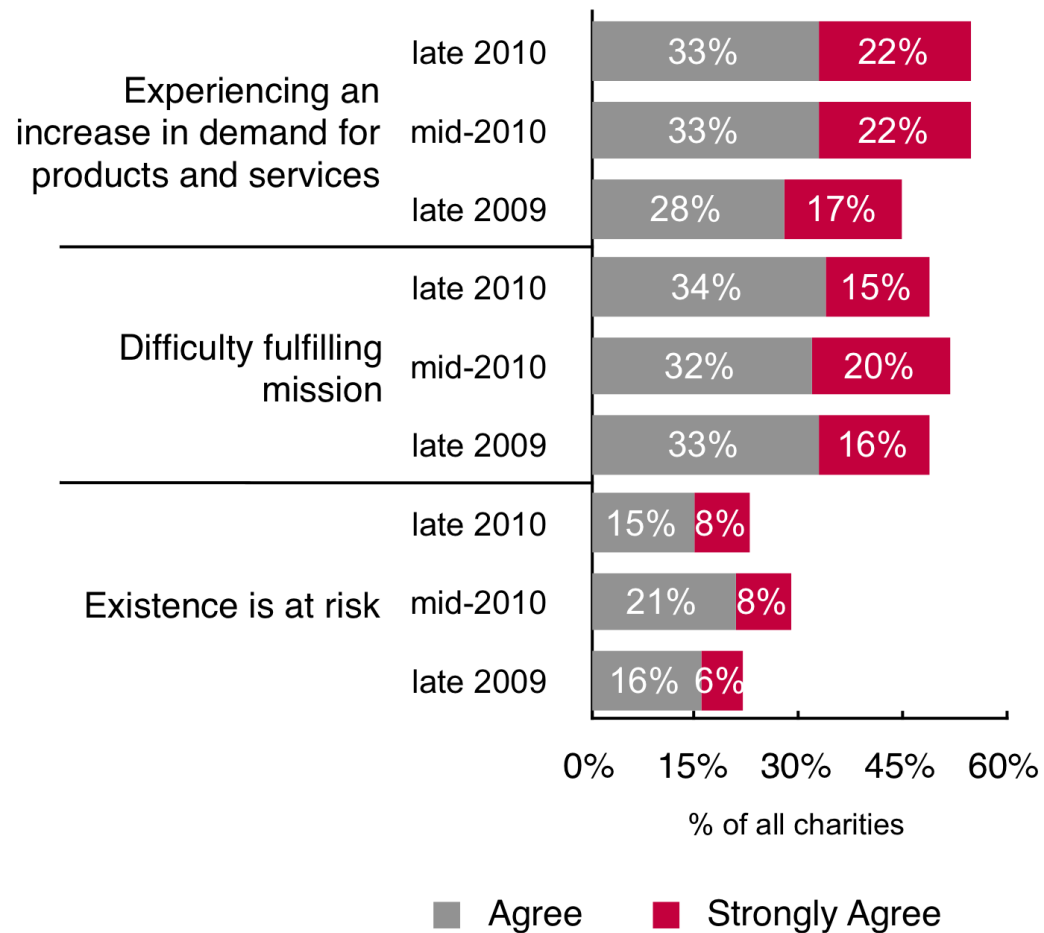
Imagine Canada's *Sector Monitor*

January 2011

Highlights from the *Sector
Monitor*, Vol.1, No.3

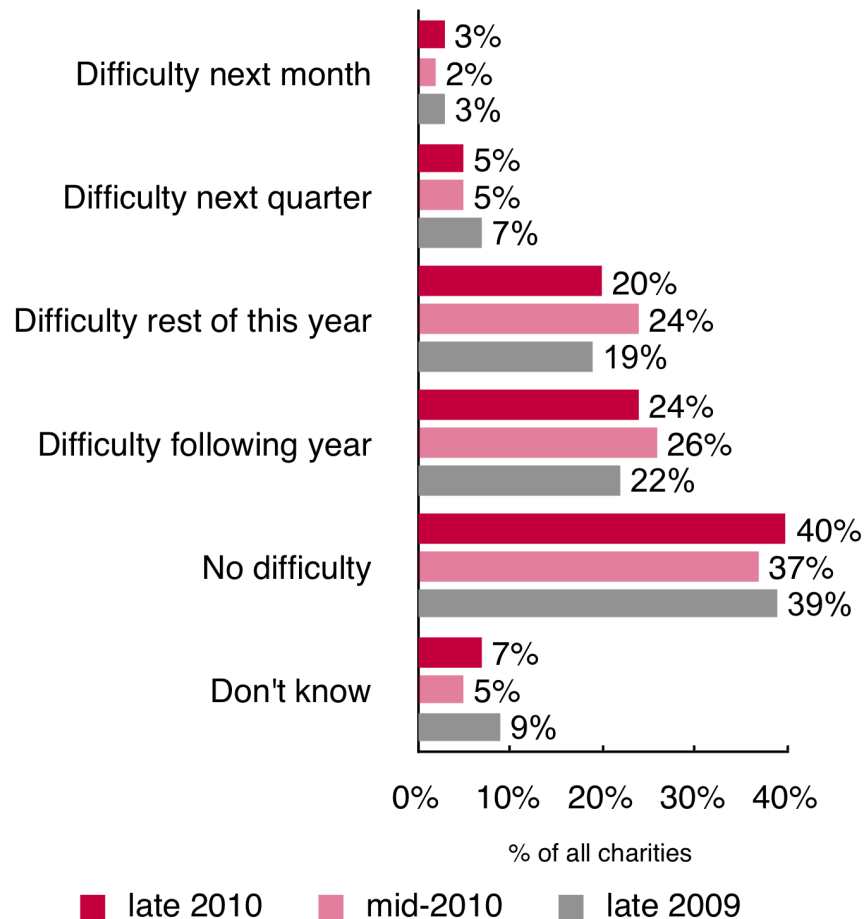
About half of organizations face challenges carrying out their mission and almost one-quarter are at risk.

Demand continues to be heightened, though other challenges are at late 2009 levels.



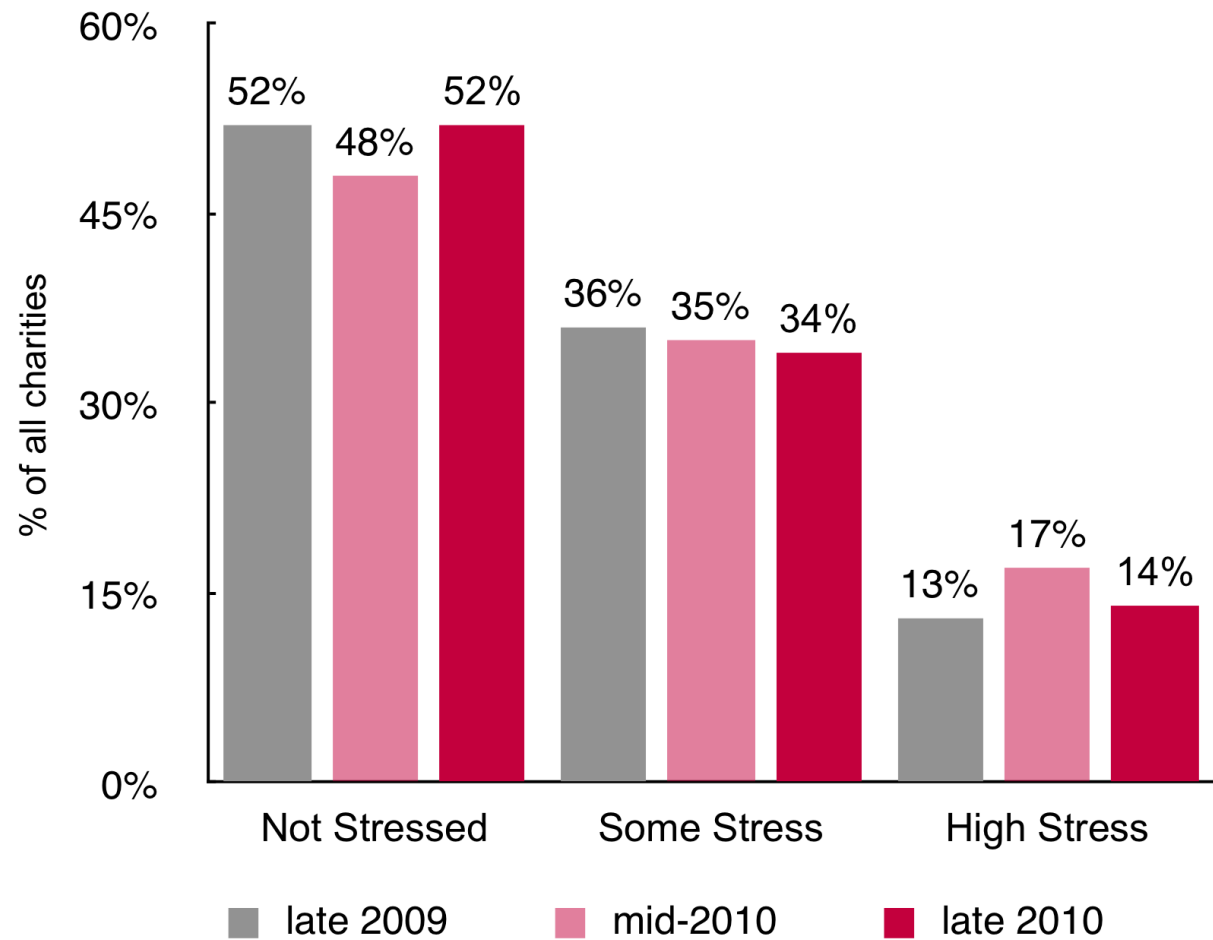
Just over half of organizations forecast difficulty covering expenses at some point in the next two years.

More organizations are still forecasting difficulty covering expenses over the medium- to long-term than in late 2009.

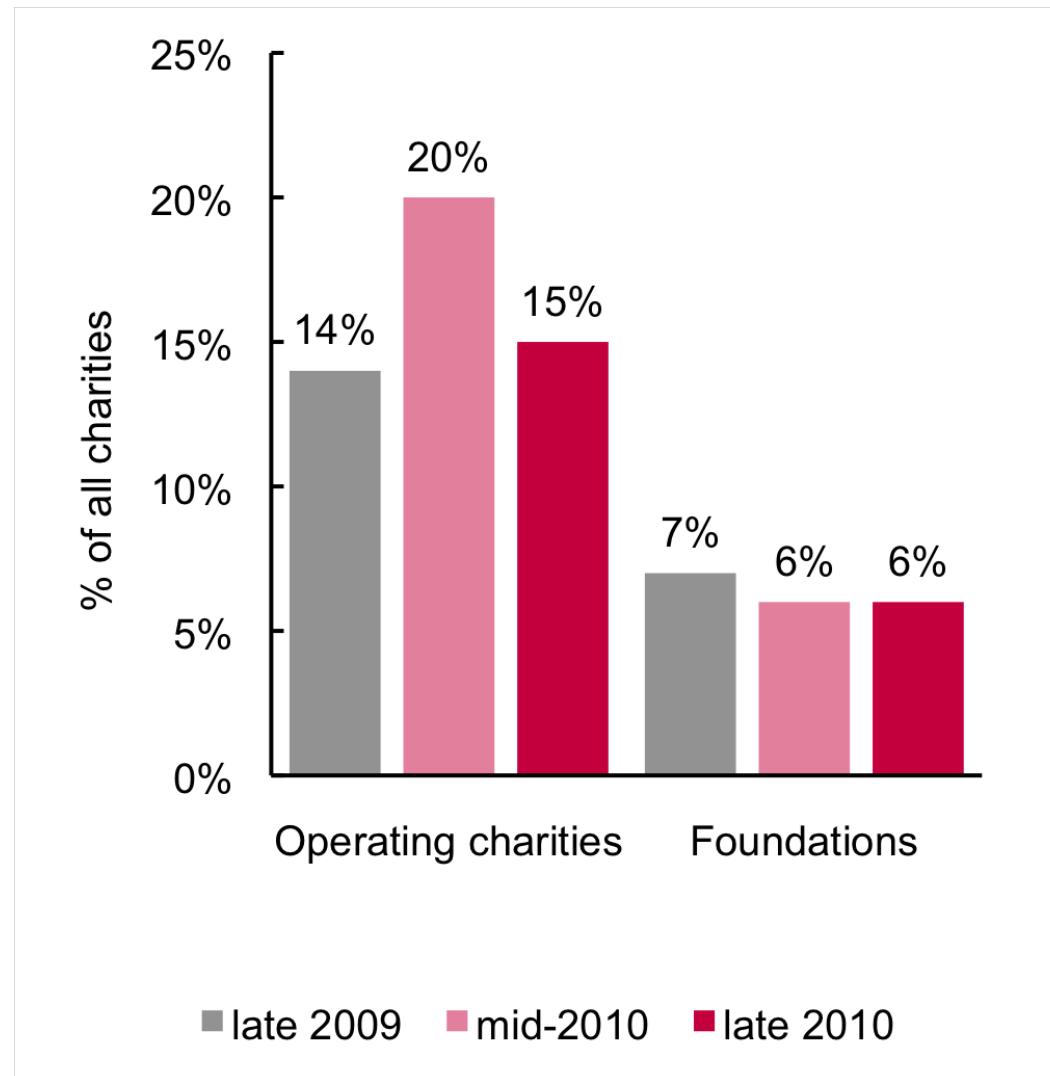


About one in seven charities is under high stress.

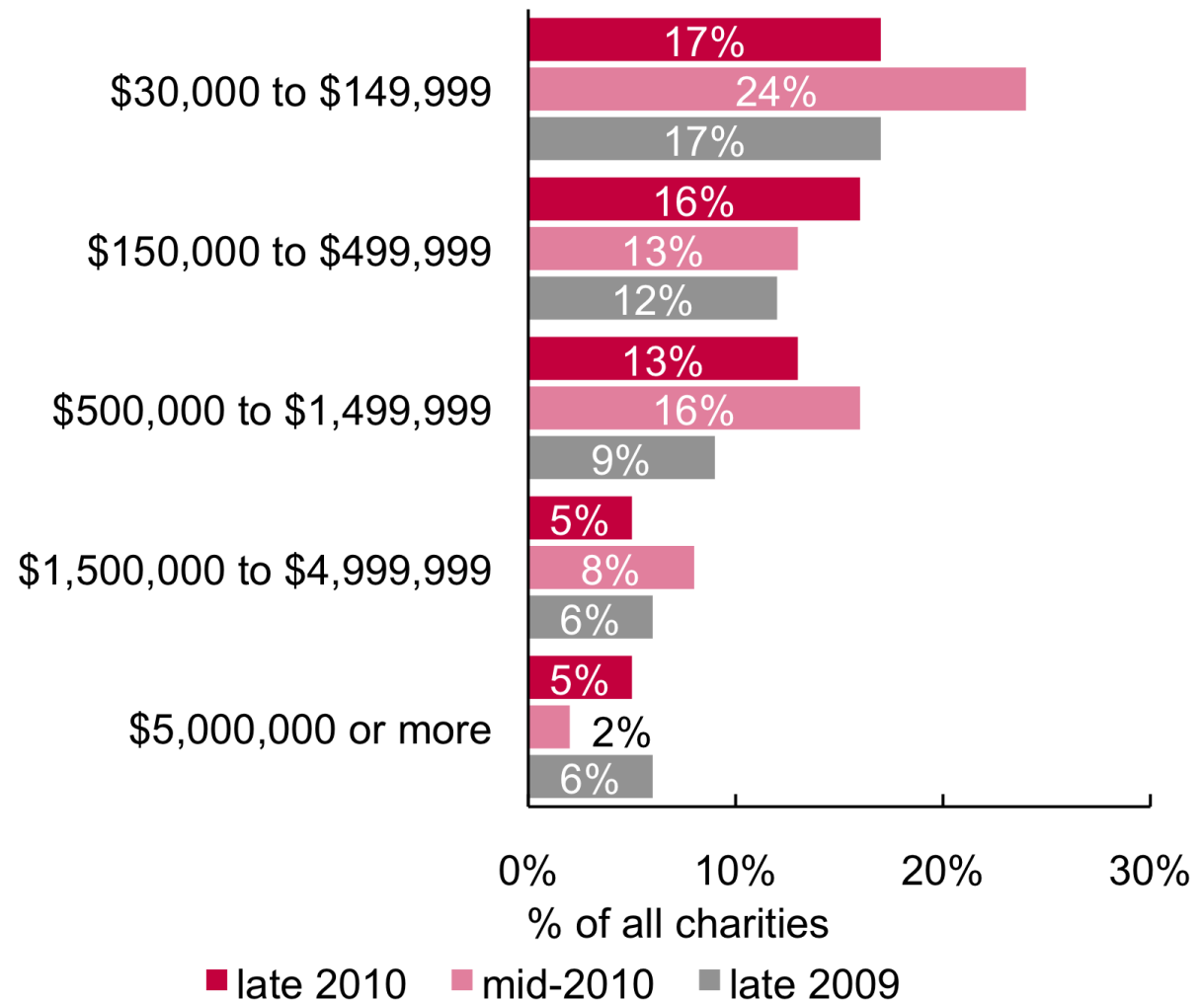
The level of stress is consistent with that seen in late 2009.



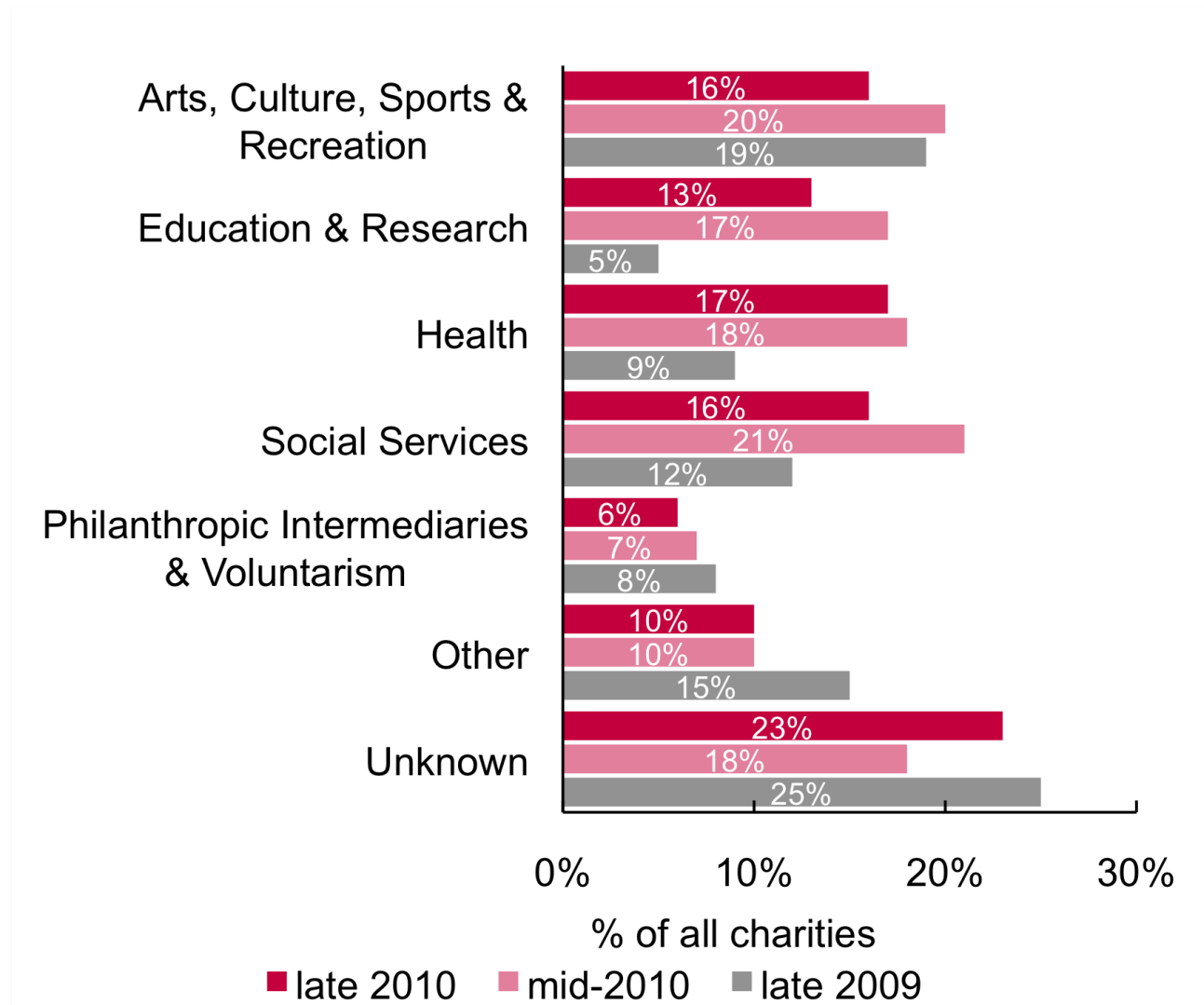
The percentage of operating charities under high stress has receded to late 2009 levels.



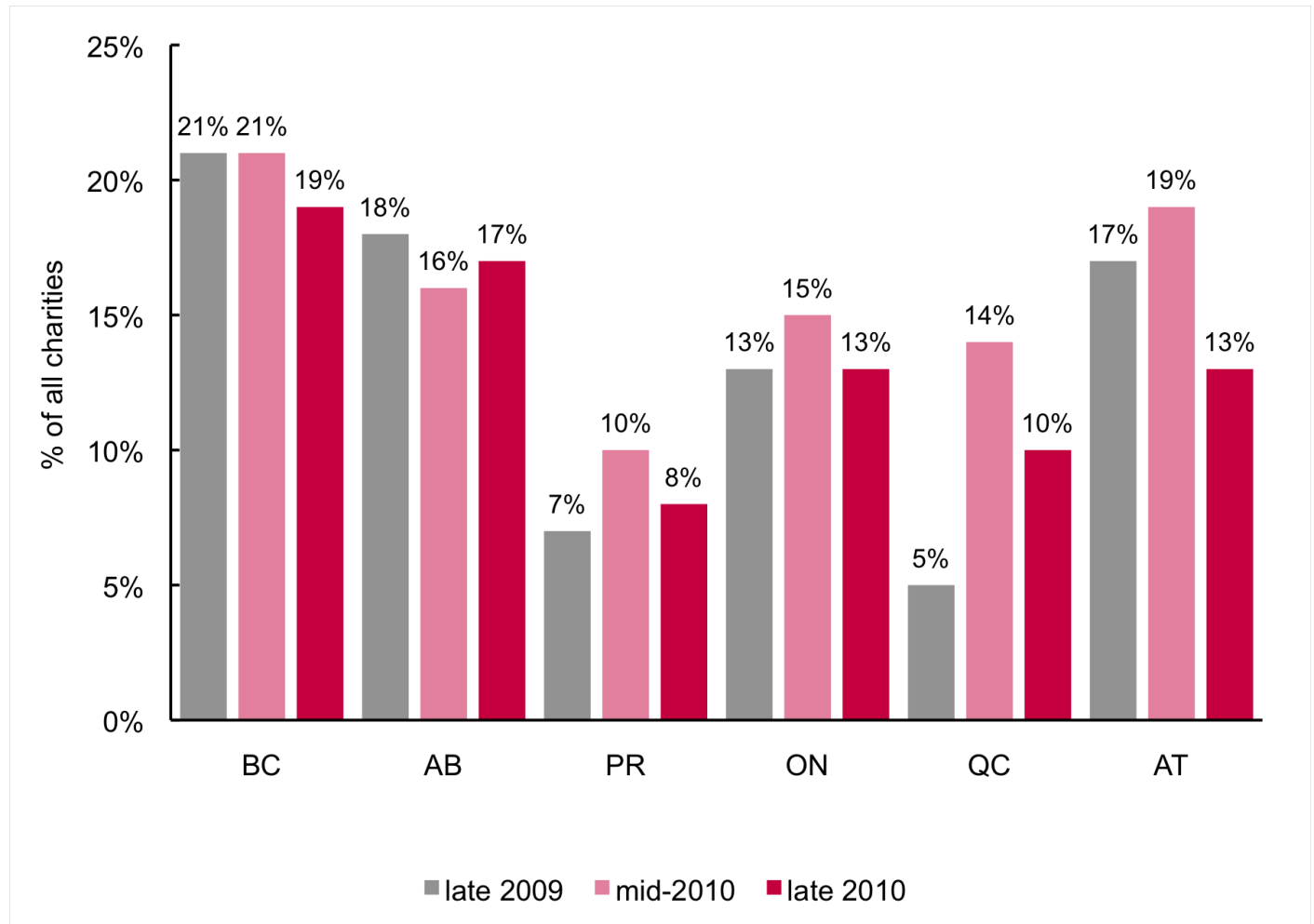
Smaller charities are more likely to be under high stress than are larger charities.



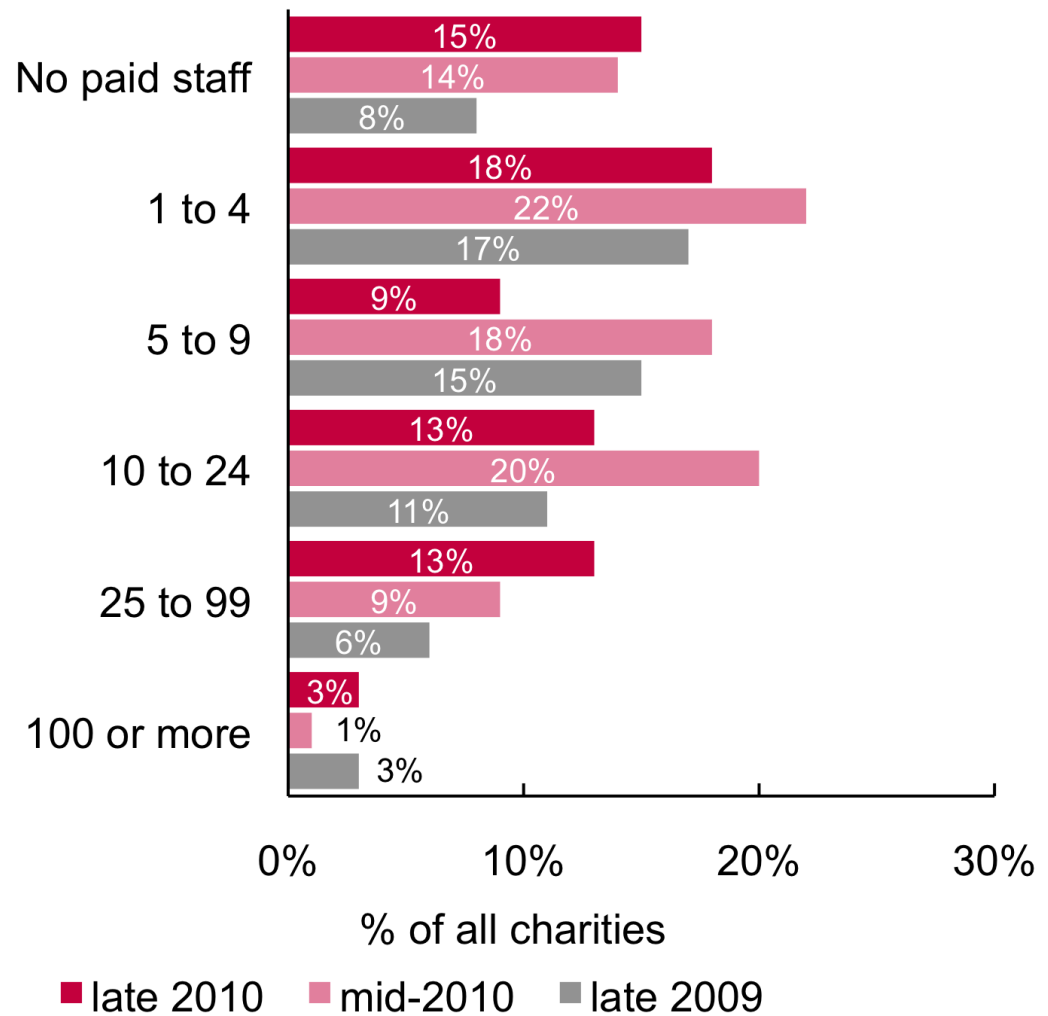
Philanthropic Intermediaries and Voluntarism Promotion organizations are less likely to be under high stress.



British
Columbia
organizations
are most likely
to be under
high stress.
Prairie
charities least
likely.

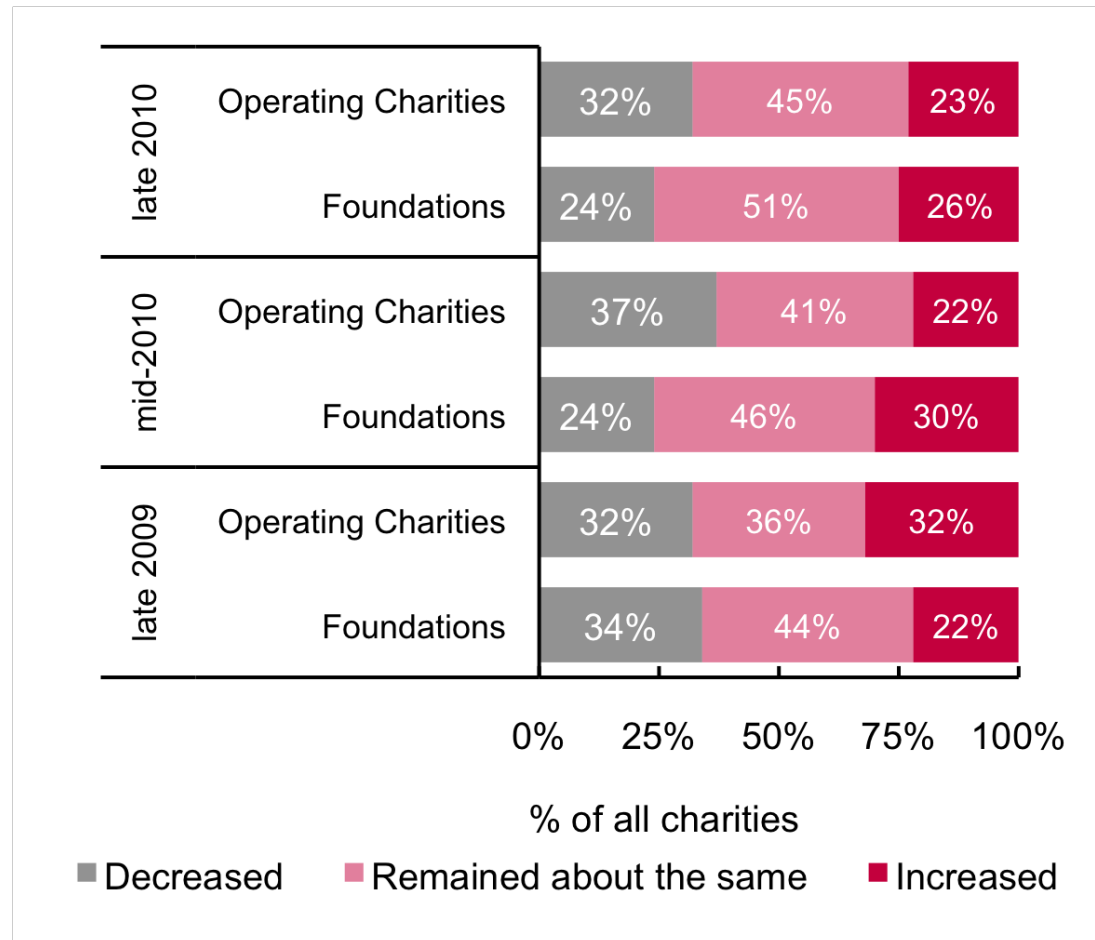


Charities with between 1 and 4 paid staff are more likely to be under high stress than most larger organizations.



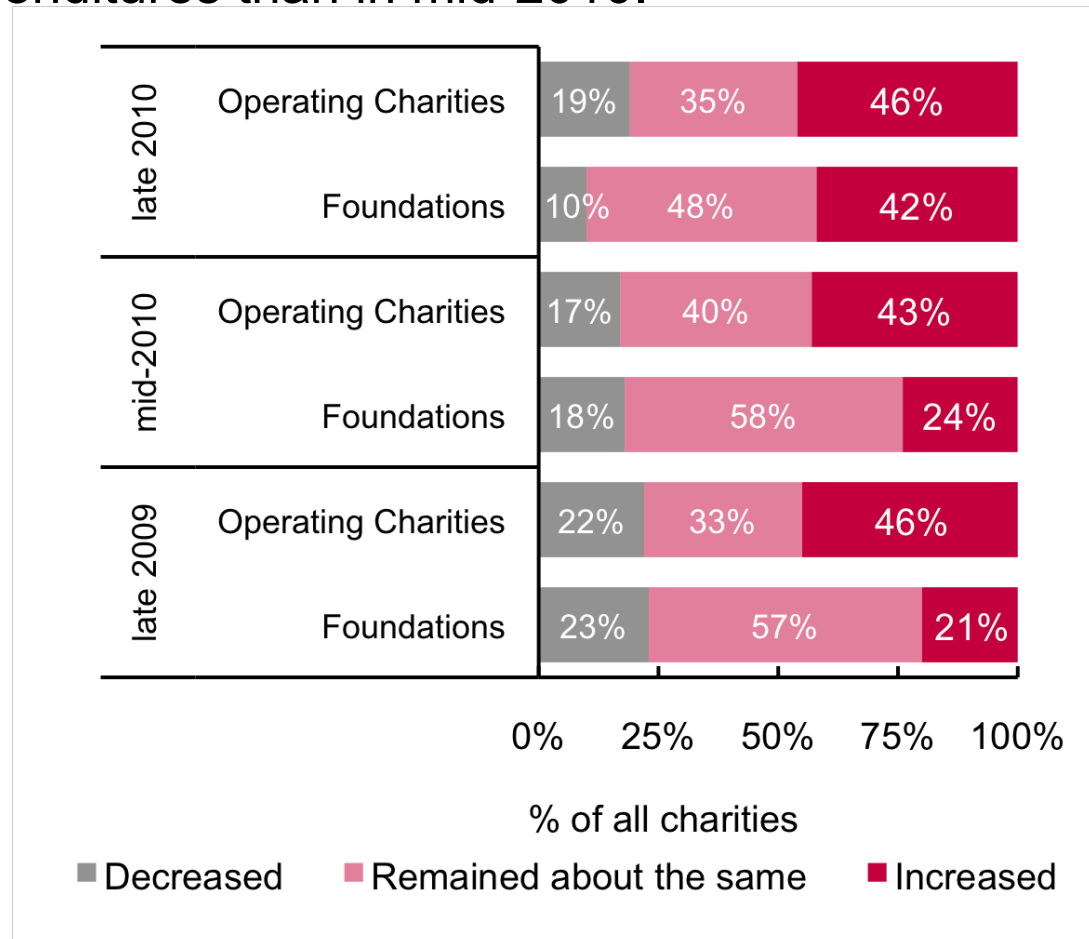
Foundations are less likely than operating charities to report decreased revenues.

Revenues are continuing to stagnate.



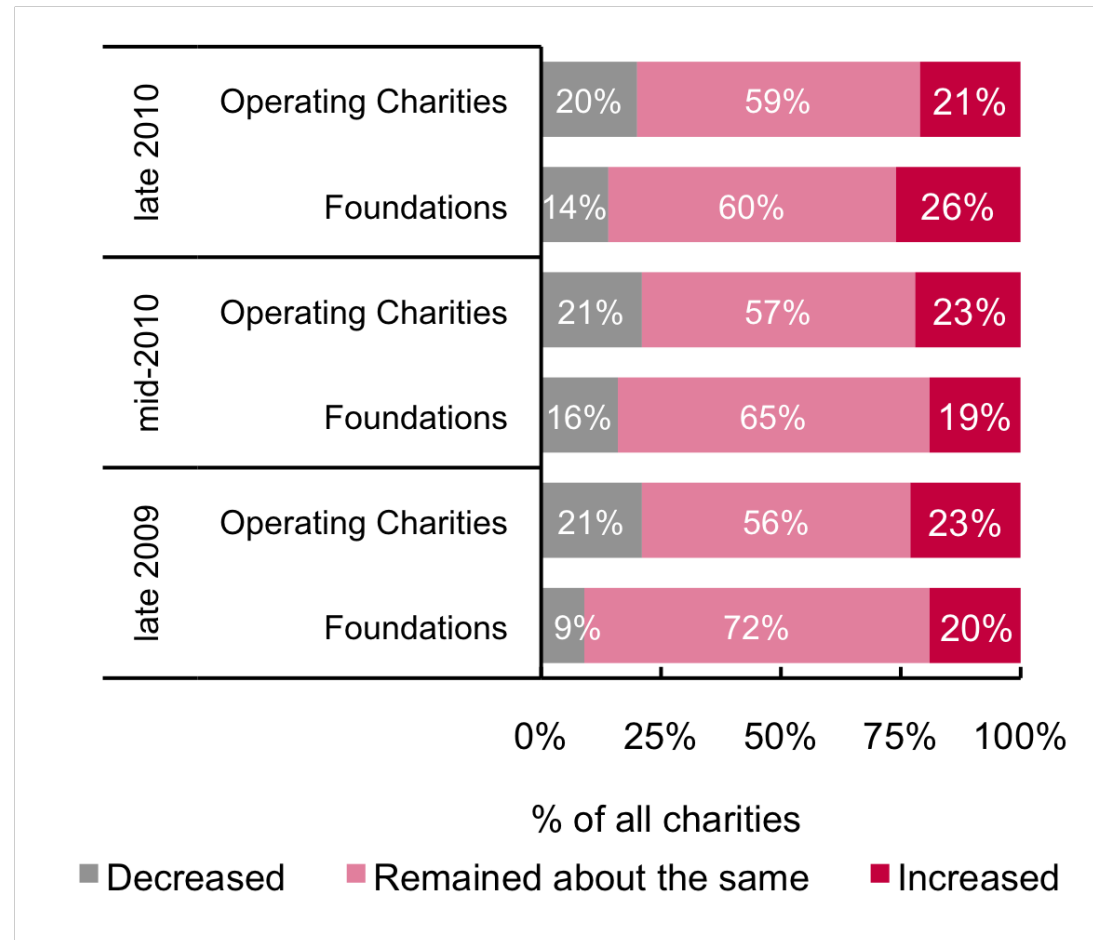
Foundations are less likely than operating charities to report that expenditures have dropped.

Charities are more likely to report increased expenditures than in mid-2010.



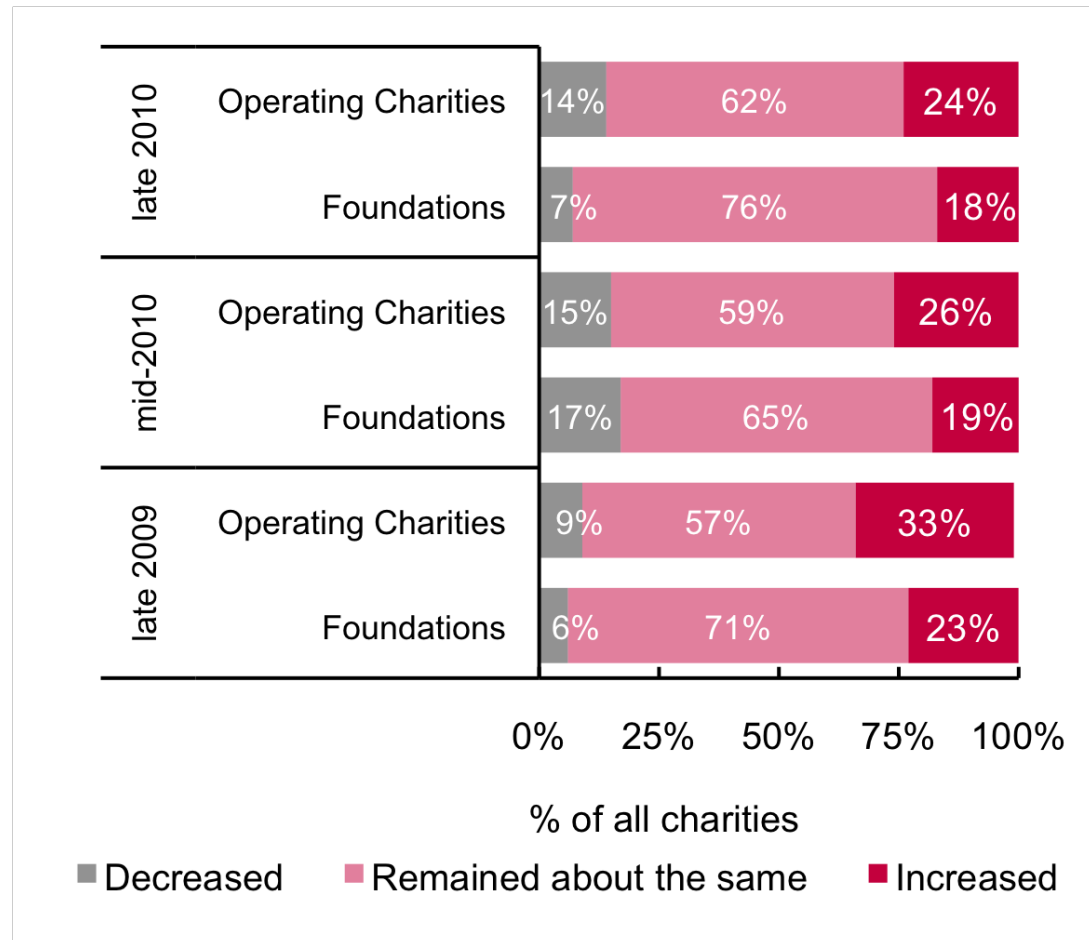
Charities with small numbers of paid staff have been losing a steady trickle of paid staff.

Superficially, the paid staff change picture remains largely stable.



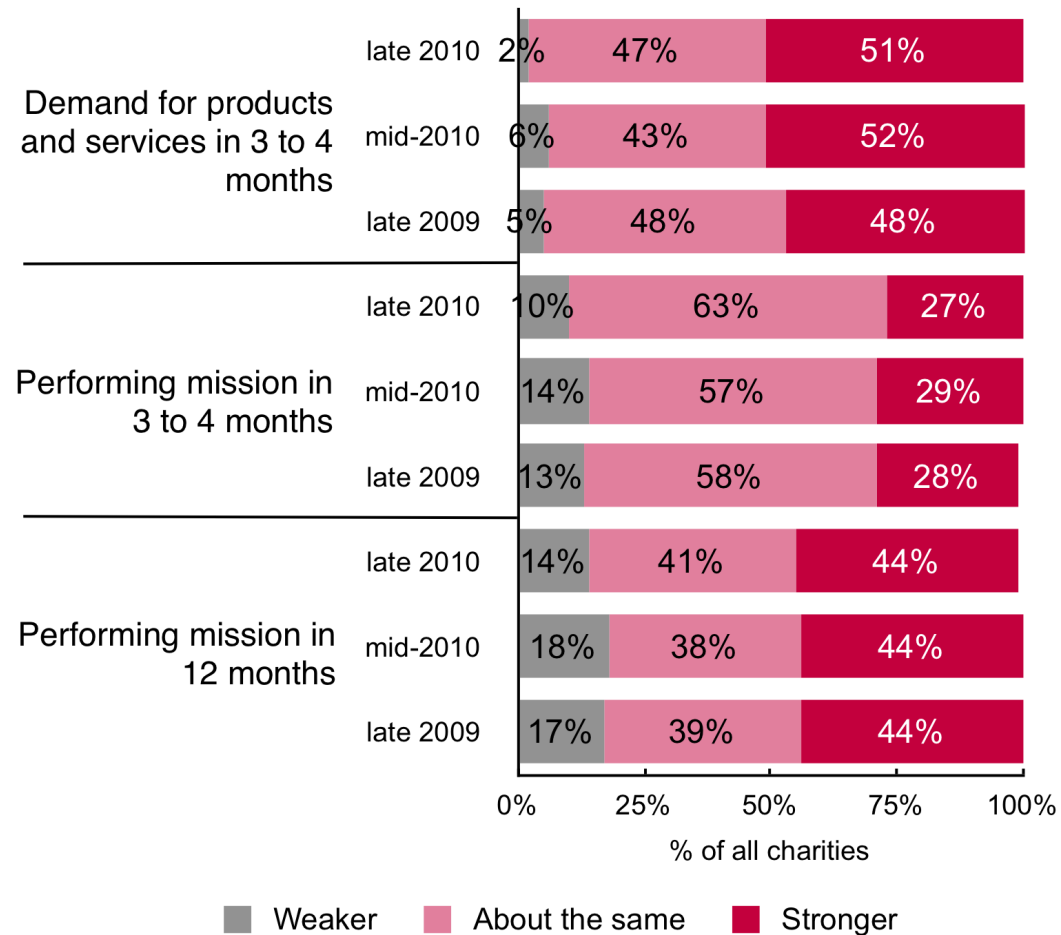
Operating charities are more likely than foundations to report that volunteer numbers have decreased.

Volunteer change picture has largely held steady from mid-2010.



Fewer organizations are predicting that they will be less able to carry out their missions or that demand will be weaker.

In spite of challenges, the level of confidence in the future remains high.



Imagine Canada's programs that support the sector include:

**CANADIAN DIRECTORY
TO FOUNDATIONS
& CORPORATIONS**

\$1 billion in available funding.



Promotion of good corporate citizenship.

Charity Tax Tools

Essential tax information for Canada's charities.



Governance and financial accountability.

**GIVING &
VOLUNTEERING**

Knowledge about the sector and how Canadians support it.

**Insurance & Liability
RESOURCE CENTRE for Nonprofits**

Risk management support for the sector.



Canada's largest collection of charitable and nonprofit resources.

Acknowledgements

We would like to acknowledge the generous financial support of The Muttart Foundation and the Government of Canada's Social Development Partnerships Program. The opinions and interpretations in this report are those of the authors and do not necessarily reflect those of the Government of Canada.

About Imagine Canada

Imagine Canada is a national charitable organization whose cause is Canada's charities and nonprofits. We reinforce the sector's collective voice, act as a forum and meeting place and create an enabling environment in which organizations contribute to building stronger communities.

Imagine Canada Toronto

2 Carlton Street
Suite 600
Toronto, Ontario M5B 1J3
Tel.: (416) 597-2293
Toll free: 1-800-263-1178

Imagine Canada Ottawa

1705 – 130 Albert Street
Ottawa, Ontario
K1P 5G4
Tel.: (613) 238-7555
Toll free: 1-800-263-1178

Imagine Canada Calgary

1800 – 855 2nd St. SW,
East Tower, Bankers Hall
Calgary, Alberta
T2P 2S5
Toll free: 1-800-263-1178

©2011, Imagine Canada This presentation is licensed under a [Creative Commons Attribution-Noncommercial-No Derivative Works 2.5 Canada License](https://creativecommons.org/licenses/by-nc-nd/2.5/ca/). Please contact the copyright holder if you would like permission to use these resources in a manner which is not covered under the current license.

